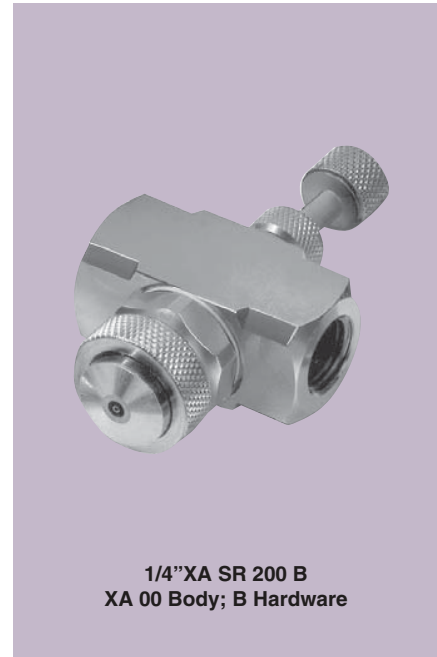
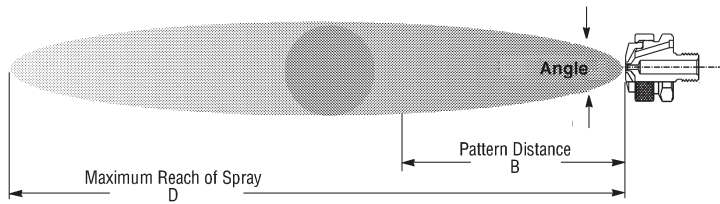


XASR

Siphon-fed Round

DESIGN FEATURES

- Lowest flow available
- Very fine atomization
- Narrow spray angle (12°- 22°)
- Full cone pattern
- Short to moderate forward spray projection



Dimensions are approximate. Check with BETE for critical dimension applications.

XA SR Set-up Flow Rates and Dimensions

Siphon-fed, External Mix, Round Spray Pattern, 1/8" and 1/4" Pipe Sizes, BSP or NPT

| Pipe Size | Spray Set-up Number | Fluid and Air Cap Numbers | ATOMIZING AIR | | Liquid Capacity in l/h (Liters Per Hour) | | | | | | | | Spray Dimensions at 200 mm. Siphon Height | | | |
|------------------|---------------------------------|---------------------------------|---------------|-----------------------------------|--|--------|--------|---------------|--------|--------|--------|--------|---|--------------------|--------|-------|
| | | | Air (bar) | Air Capacity (Nm ³ /h) | Gravity Head | | | Siphon Height | | | | | Air (bar) | Spray Angle (deg.) | B (mm) | D (m) |
| | | | | | 450 mm | 300 mm | 150 mm | 100 mm | 200 mm | 300 mm | 600 mm | 900 mm | | | | |
| 1/8 or 1/4 | SR 050 | Fluid Cap FC7 & Air Cap AC 1201 | 0.7 | 0.66 | 1.5 | 1.3 | 1.1 | 0.9 | 0.7 | 0.5 | 0.6 | 0.8 | 0.7 | 18 | 280 | 1.8 |
| | | | 1.5 | 1.02 | 1.8 | 1.7 | 1.5 | 1.3 | 1.2 | 1.1 | 1.1 | 0.9 | 1.5 | 18 | 280 | 1.9 |
| | | | 3.0 | 1.68 | 2.1 | 1.9 | 1.7 | 1.5 | 1.4 | 1.3 | 1.1 | 0.8 | 3.0 | 18 | 300 | 2.3 |
| | | | 4.0 | 2.16 | 2.2 | 2.0 | 1.8 | 1.6 | 1.5 | 1.4 | 1.2 | 0.9 | 4.0 | 18 | 360 | 2.6 |
| | SR 150 | Fluid Cap FC4 & Air Cap AC1201 | 0.7 | 0.78 | 24 | 2.1 | 1.7 | 1.5 | 1.2 | 0.8 | 0.9 | | 0.7 | 18 | 300 | 2.1 |
| | | | 1.5 | 1.20 | 2.8 | 2.6 | 2.4 | 2.1 | 1.9 | 1.6 | 0.9 | | 1.5 | 18 | 330 | 2.3 |
| 3.0 | | | 1.92 | 3.4 | 3.1 | 2.9 | 2.8 | 2.6 | 2.4 | 1.7 | 1.1 | 3.0 | 18 | 380 | 2.6 | |
| 4.0 | | | 2.46 | 3.7 | 3.4 | 3.3 | 3.1 | 2.9 | 2.7 | 2.1 | 1.5 | 4.0 | 19 | 430 | 3.0 | |
| SR 200 | Fluid Cap FC4 & Air Cap AC1202 | 0.7 | 1.38 | 2.5 | 2.3 | 2.0 | 1.6 | 1.4 | 1.1 | 0.9 | | 0.7 | 18 | 300 | 2.4 | |
| | | 1.5 | 2.16 | 2.9 | 2.8 | 2.5 | 2.2 | 2.0 | 1.7 | 0.9 | | 1.5 | 18 | 330 | 2.7 | |
| | | 3.0 | 3.48 | 3.4 | 3.3 | 3.2 | 2.9 | 2.8 | 2.5 | 1.9 | 1.2 | 3.0 | 19 | 380 | 3.4 | |
| | | 4.0 | 4.44 | 3.7 | 3.6 | 3.5 | 3.4 | 3.3 | 3.0 | 2.5 | 2.0 | 4.0 | 20 | 430 | 4.0 | |
| SR 250 | Fluid Cap FC3 & Air Cap AC1202 | 0.7 | 1.14 | 4.5 | 4.0 | 3.4 | 21 | 1.8 | 1.4 | | | 0.7 | 21 | 380 | 3.0 | |
| | | 1.5 | 1.86 | 5.3 | 4.9 | 4.4 | 3.5 | 2.9 | 2.7 | 1.8 | | 1.5 | 21 | 410 | 3.4 | |
| | | 3.0 | 3.00 | 6.0 | 5.6 | 5.0 | 4.4 | 4.0 | 3.4 | 2.4 | 1.2 | 3.0 | 21 | 460 | 4.0 | |
| | | 4.0 | 3.90 | 5.7 | 5.4 | 5.0 | 4.2 | 3.9 | 3.5 | 2.8 | 1.9 | 4.0 | 22 | 510 | 4.6 | |
| SR 400 | Fluid Cap FC1 & Air Cap AC 1204 | 1.5 | 3.48 | 22 | 19.9 | 16.3 | 12.3 | 10.5 | 8.3 | 2.8 | | 1.5 | 17 | 460 | 3.7 | |
| | | 3.0 | 5.28 | 25 | 23 | 19.5 | 16.7 | 14.2 | 11.5 | 6.4 | 2.8 | 3.0 | 18 | 510 | 4.3 | |
| | | 4.0 | 6.66 | 26 | 24 | 21 | 18.4 | 15.7 | 12.9 | 7.9 | 4.5 | 4.0 | 18 | 530 | 4.9 | |
| | | 5.6 | 8.82 | 26 | 24 | 22 | 19.7 | 17 | 14.6 | 9.8 | 6.1 | 5.6 | 19 | 580 | 5.5 | |
| SR 450 | Fluid Cap FC5 & Air Cap AC 1205 | 2.0 | 8.64 | | | | 27 | 22 | 16.8 | | | 2.0 | 20 | 510 | 6.7 | |
| | | 3.0 | 11.4 | | | | 30 | 26 | 21 | | | 3.0 | 20 | 530 | 7.0 | |
| | | 4.0 | 14.4 | | | | 31 | 28 | 23 | 11.0 | | 4.0 | 21 | 580 | 7.6 | |
| | | 5.6 | 18.9 | 44 | 42 | 40 | 31 | 28 | 24 | 16.7 | 8.3 | 5.6 | 22 | 630 | 8.2 | |

Standard Materials: Nickel-plated Brass, 303 Stainless Steel, and 316 Stainless Steel