



HOLLOW CONE

# THIW

## Tangential Inlet/Wide Spray Band



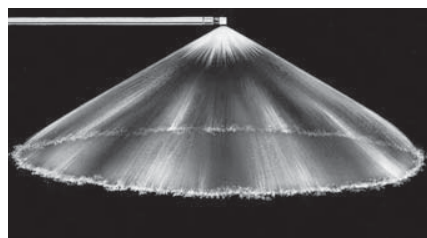
Metal

### DESIGN FEATURES

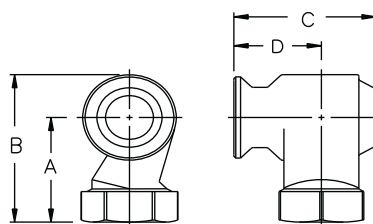
- Large free passage
- Clog-resistant; nozzles have no internal parts
- Wide spray band
- Female connection
- Flanged connection available
- Silicon carbide available upon request
- Inlet and outlet are in-line

### SPRAY CHARACTERISTICS

- Spray pattern:** Hollow Cone
- Spray angle:** Wide
- Flow rates:** 15.3 to 2230 l/min



Hollow Cone - Wide Angle



Dimensions are approximate. Check with BETE for critical dimension applications.

### THW Flow Rates and Dimensions

Hollow Cone, Wide Spray Angles, 1" to 3" Pipe Sizes, BSP or NPT

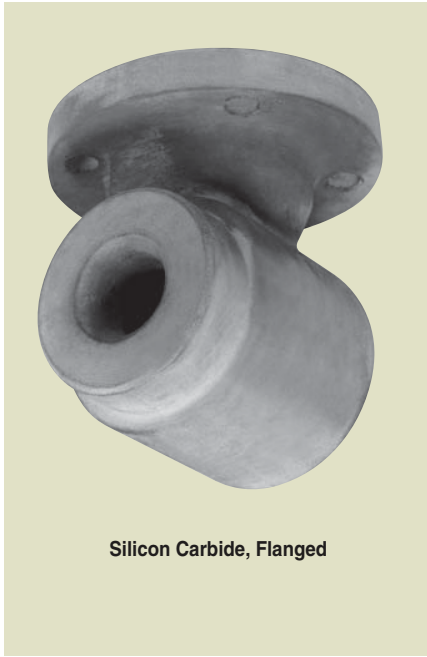
Female Pipe Size	Nozzle Number	Spray Angles				K Factor	LITERS PER MINUTE @ BAR								Approx. Orifice Dia. (mm)	Free Pass. Dia. (mm)	Dimensions (mm) (MAX)				Wt. (kg)
		0.3 bar	1 bar	3 bar			0.2 bar	0.3 bar	0.5 bar	0.7 bar	1 bar	1.5 bar	2 bar	3 bar			A	B	C	D	
1	THFW1508	100°	100°	100°	34.2	15.3	18.7	24.2	28.6	34.2	41.9	48.3	59.2	8.73	8.73	58.7	79.5	63.3	39.4	0.47	
	THFW1808	115°	115°	115°	41.0	18.3	22.5	29.0	34.3	41.0	50.2	58.0	71.0	9.53	9.53						
	THFW2308	120°	120°	120°	52.4	23.4	28.7	37.1	43.9	52.4	64.2	74.1	90.8	11.1	11.1						
	THFW2708	120°	120°	120°	61.5	27.5	33.7	43.5	51.5	61.5	75.4	87.0	107	11.9	11.9						
	THFW3208	120°	120°	120°	72.9	32.6	39.9	51.6	61.0	72.9	89.3	103	126	13.9	13.9						
	THFW3808	120°	120°	120°	86.6	38.7	47.4	61.2	72.5	86.6	106	122	150	15.2	15.2						
1 1/4	THFW3210	120°	120°	120°	72.9	32.6	39.9	51.6	61.0	72.9	89.3	103	126	13.9	13.9	74.2	99.3	75.4	46.7	0.75	
	THFW3810	125°	125°	125°	86.6	38.7	47.4	61.2	72.5	86.6	106	122	150	15.9	15.9						
	THFW4110	125°	125°	125°	93.4	41.8	51.2	66.1	78.2	93.4	114	132	162	16.7	16.7						
	THFW5210	125°	125°	125°	119	53.0	64.9	83.8	99.1	119	145	168	205	19.8	19.8						
	THFW7010	125°	125°	125°	160	71.3	87.4	113	133	160	195	226	276	26.2	22.6						
1 1/2	THFW6112	110°	110°	110°	139	62.2	76.1	98.3	116	139	170	197	241	19.4	19.4	75.7	105	94.0	59.9	0.88	
	THFW7012	112°	115°	115°	160	71.3	87.4	113	133	160	195	226	276	21.4	21.4						
	THFW7712	117°	120°	120°	175	78.5	96.1	124	147	175	215	248	304	23.4	23.4						
	THFW9012	117°	120°	120°	205	91.7	112	145	172	205	251	290	355	26.2	26.2						
	THFW12712	117°	120°	120°	289	129	159	205	242	289	354	409	501	32.9	27.0						
	THFW14512	117°	120°	120°	330	148	181	234	276	330	405	467	572	36.1	27.0						

$$\text{Flow Rate (l/min)} = K \sqrt{\text{bar}}$$

Standard Materials: Brass, Carbon Steel, and 316 Stainless Steel

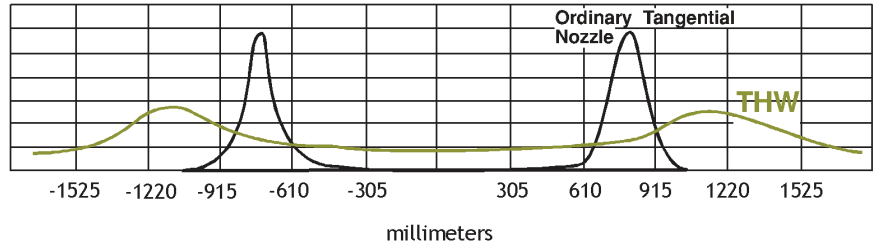
Spray angle performance varies with pressure. Contact BETE for specific data on critical applications.

TO ORDER: specify pipe size, connection type, nozzle number, spray angle, and material.



Silicon Carbide, Flanged

Note: spray angles are for cast alloy nozzles only; not SNBSC.



Dimensions are approximate. Check with BETE for critical dimension applications.

**THW Flow Rates and Dimensions**

Hollow Cone, Wide Spray Angles, 1" to 3" Pipe Sizes, BSP or NPT

Female Pipe Size	Nozzle Number	Spray Angles			K Factor	LITERS PER MINUTE @ BAR								Approx. Orifice Dia. (mm)	Free Pass. Dia. (mm)	Dimensions (mm) (MAX)				Wt. (kg)
		0.3 bar	1 bar	3 bar		0.2 bar	0.3 bar	0.5 bar	0.7 bar	1 bar	1.5 bar	2 bar	3 bar			A	B	C	D	
2	THFW8516	112°	115°	115°	194	86.6	106	137	162	194	237	274	336	21.8	21.8	92.2	131	117	72.6	1.47
	THFW10516	120°	122°	122°	239	107	131	169	200	239	293	338	414	25.4	25.4					
	THFW12516	119°	122°	122°	285	127	156	201	238	285	349	403	493	29.0	29.0					
	THFW14516	122°	125°	125°	330	148	181	234	276	330	405	467	572	32.1	32.1					
	THFW17016	125°	125°	125°	387	173	212	274	324	387	474	548	671	35.3	35.3					
	THFW19216	125°	125°	125°	438	196	240	309	366	438	536	619	758	38.5	36.5					
	THFW20516	125°	125°	125°	467	209	256	330	391	467	572	661	809	41.3	36.5					
THFW23016	125°	125°	125°	524	234	287	371	439	524	642	741	908	44.5	36.5						
2 1/2	THFW17020	117°	120°	120°	387	173	212	274	324	387	474	548	671	33.7	33.7	125	180	156	104	3.20
	THFW19020	117°	120°	120°	433	194	237	306	362	433	530	612	750	36.1	36.1					
	THFW20520	117°	120°	120°	467	209	256	330	391	467	572	661	809	37.3	37.3					
	THFW23020	123°	125°	125°	524	234	287	371	439	524	642	741	908	40.1	40.1					
	THFW28020	128°	130°	130°	638	285	349	451	534	638	781	902	1110	46.0	44.5					
	THFW32020	128°	130°	130°	729	326	399	516	610	729	893	1030	1260	51.2	44.5					
	THFW34020	128°	130°	130°	775	347	424	548	648	775	949	1100	1340	53.2	44.5					
THFW43520	128°	130°	130°	991	443	543	701	829	991	1210	1400	1720	61.9	44.5						
3	THFW18524	122°	122°	122°	422	189	231	298	353	422	516	596	730	32.5	32.5	149	209	182	117	4.29
	THFW23024	122°	122°	122°	524	234	287	371	439	524	642	741	908	36.5	36.5					
	THFW28024	122°	122°	122°	638	285	349	451	534	638	781	902	1110	41.3	41.3					
	THFW32024	125°	125°	125°	729	326	399	516	610	729	893	1030	1260	45.2	45.2					
	THFW34024	125°	125°	125°	775	347	424	548	648	775	949	1100	1340	46.8	46.8					
	THFW41224	128°	130°	130°	939	420	514	664	786	939	1150	1330	1630	53.6	53.6					
	THFW46924	129°	132°	135°	1070	478	585	756	894	1070	1310	1510	1850	57.9	54.0					
	THFW52624	129°	132°	135°	1200	536	657	848	1000	1200	1470	1700	2080	63.1	54.0					
	THFW56424	129°	132°	135°	1290	575	704	909	1080	1290	1570	1820	2230	65.9	54.0					

Flow Rate ( $l_{min}$ ) =  $K \sqrt{bar}$

Standard Materials: Brass, Carbon Steel, and 316 Stainless Steel

Spray angle performance varies with pressure. Contact BETE for specific data on critical applications.



HOLLOW CONE

CALL 413-772-0846  
Call for the name of your nearest BETE representative.